

6.1.2

The effective leadership is visible in various institutional practices such as decentralization and participative management.

Index

Sr. No	Description	Page No.
1.	Flow chart	2 - 3
2.	Committees	4-22
3.	Decentralization & participative management in institution	23-52

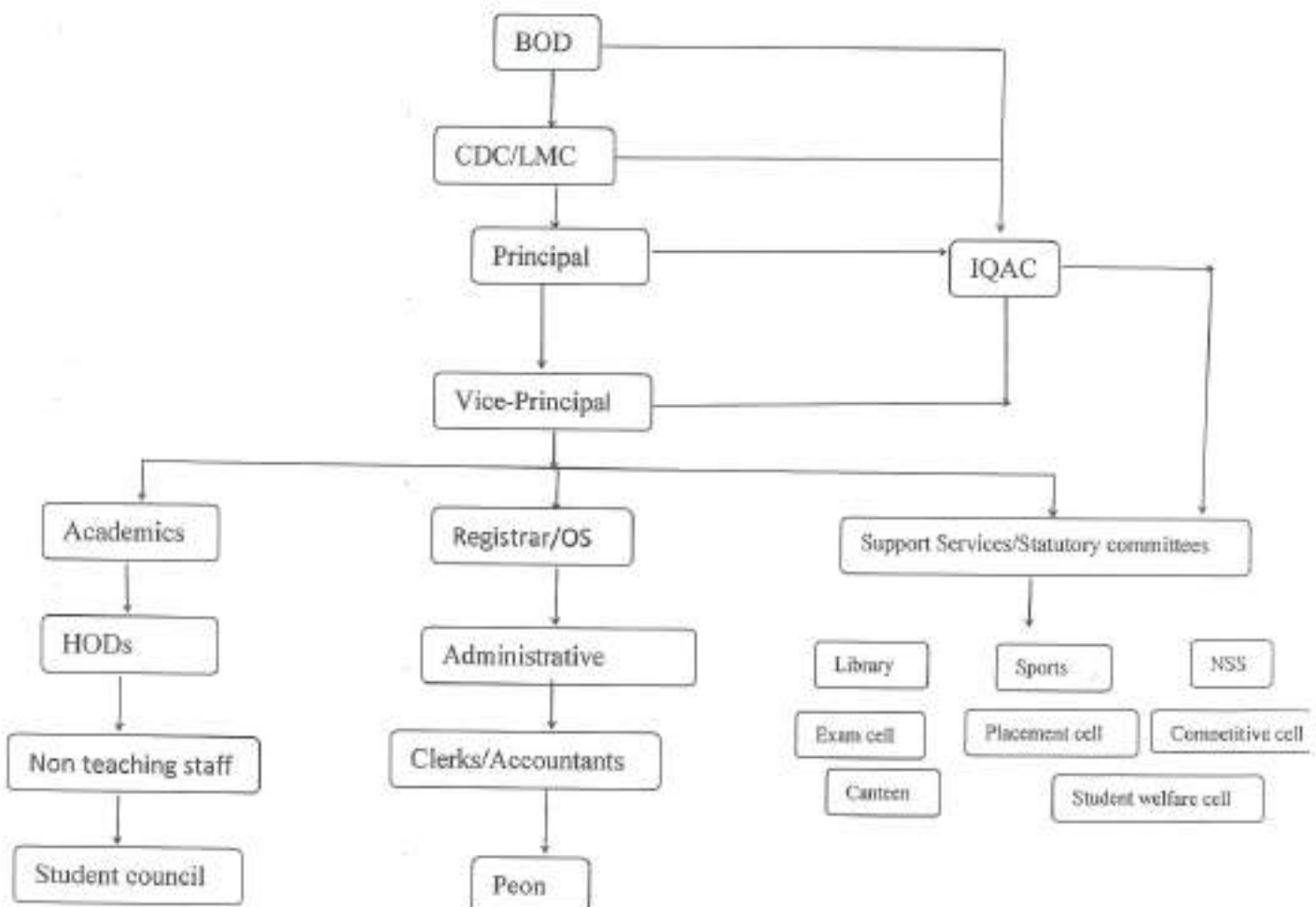


6.1.2: The effective leadership is visible in various institutional practices such as decentralization and participative management.

The governing body delegated all the academic and operational decisions, based on policy to the principal. He formulates common working procedures and entrusts their implementations to the respective authorities. Faculty members are given representation in various committees. They are made in charge of various academic, co-curricular and extra-curricular activities. They are encouraged to develop their leadership skills, they are appointed as Co-Ordinator and convener for organizing seminar/ conferences/ workshop for effective implementation of decisions and different committees are formed all departments and committees have operational autonomy. The college promotes a lecture of participative management by involving the staff and students in various activities. All decisions are governed by management. Students and faculties are allowed to experts themselves of any suggestions to improve the excellence in activities

The principal academic Co-ordinator and staff members are involved in defining the policies and procedures framing guidelines, rules and regulations relating to admissions, placements, discipline and grievance, training / development etc. and take care for their effective implementation.

Following chart indicates how decentralization/participative management work in the institution:-



The above chart indicates as to how the institutional work is divided and subdivided among different departments, each one under the charge of separate individual. All other staff members help to their heads to attain the departmental objectives. Targets are set for department. It helps to get the co-operation from each member of staff in attaining the objectives of the institution. IQAC monitors and supports the above activities. The college believes in decentralization of authority and participative management. There are different committees in the college to look after various curricular and non-curricular activities. The principal is the head of the college, meetings are held under the chairpersonship of the principal for smooth and efficient working of the college. In case of administrative work the office superintendent is the prime authority and all non-teaching staff works under him.

Committees Year – 2016 - 17

Sr. No.	Committee	Member	Designation
1	Admission Committee	Prof. H.V. Soshte	Convener
		Prof. B. G. Pawar	Member
		Prof. G. P. Geedh	Member
		Prof. R. R. Taur	Member
		Prof. P. H. Palil	Member
		Pro. S. R. Waswani	Member
2	Time – Table	Prof. B. G. Pawar	Convener
		Prof.D. G. Chavan	Member
3	Exam Committee	Prof.D. G. Chavan	Convener
		Prof. M. L. Mulik	Member
		Prof. P.R.Bhosale	Member
		Prof. p.p.kamble	Member
		Prof. U.B.Gaikar	Member
		Prof. L.N.Bhoir	Member
4	Attendance Committee	Prof. M.V. KAMBLE	Convener
		Prof. M. M. Sawant	Member
		Prof. P. J. Jadhav	Member
5	Library Committee	Prof. R.V.Kapadi	Convener
		Prof.H.V.Soshte	Member
		Prof.N.U.Deshmukh	Member
		Prof.D.G.Kamble	Member
		Prof.R.R.Kanse	Member
		Shri. P.C.More	Member
6	Disciplinary (Raging)	Prof. B. G. Pawar	Convener
		Prof. K.P.Kante	Member
		Prof. L. N. Bhoir	Member
7	Staff Academic	Prof. B. G. Pawar	Convener
		Prof. P.R.Bhosale	Member
8	Competitive Exam Cem.	Prof. L. N. Bhoir	Convener
		Prof. S. V. Patil	Member



9	Women Development	Prof. S. B. Tiwari	Convener
		Prof. S. S. Kamble	Member
		Prof. S.R.Wasvani	Member
		Prof. R. N. Sonawane	Member
		Prof. Geeta Gaikar	Member
10	Marathi Literary Association	Prof. H. V. Soshte	Convener
		Prof. D.G. Kamble	Member
11	English Literary Association	Prof. P. J. Jadhav	Convener
		Prof. M. S. Chavan	Member
12	Gymkhana Committee	Prof. H. V. Soshte	Convener
		Prof. M.Deshmukh	Member
		Prof.U.B.Gaikar	Member
		Prof.R.N.Khanderao	Member
		Prof. C.D.Gurav	Member
13	Science Forum Committee	Prof. P. H. Patil	Convener
		Prof. P. R. Bhosale	Member
		Prof. S. B. TIWARI	Member
		Prof.M.M.Sawant	Member
		Prof.K.P.Kante	Member
		Prof.A.S.Gaikar	Member
		Prof.Y.S.Tribhuvane	Member
		Prof.R.A.Tribhuvane	Member
14	IT Forum committee	Prof. P. P. Kamble	Convener
		Prof.P.S.Gaikwad	Member
		Prof.S.S.Wairalkar	Member
		Prof.C.D.Gurav	Member
15	N.S.S. committee	Prof. B. G. Pawar	Convener
		Prof. S. R. Waswani	Member
		Prof. M. V. Kamble	Member
		Prof.M M. Sawant	Member
16	DLLE Committee	Prof. N.U. Deshmukh	Convener
		Prof. P. H. Patil	Member
17	Placement Cell	Prof. U.B.Gaikar	Convener
		Prof. S. Sarvade	Member
		Prof. N.Ghodvinde	Member



18	Alumani Committee	Prof. H. V. Soshte	Convener
		Prof. B. G. Pawar	Member
		Prof. D. G. Chavan	Member
		Prof. R. R. Taur	Member
		Prof. P. H. Patil	Member
19	Nature Club Committee	Prof. P. R. Bhosale	Convener
		Prof. D. D. Pawar	Member
		Prof. Y. S. Tribhuvane	Member
		Prof. S. A. Kelkar	Member
20	Cultural committee	Prof. D. G. Kamble	Convener
		Prof. M. P. Kakade	Member
		Prof. R. R. Kanse	Member
		Prof. M.S. Chavan	Member
21	Research Committee	Prof. S. S. Kamble	Convener
		Prof. R. R. Taur	Member
		Prof. M. P. Kakade	Member
22	College Canteen Committee	Prof. V. G. Sonar	Convener
		Prof. B. D. Bhoir	Member
		Prof. R. A. Tribhuvane	Member
		Prof. P.V.Ingale	Member
23	Scholarship committee	Prof. R. R. Kanse	Convener
		Prof. A. S. Gaikar	Member
		Prof. S.S.Kamble	Member
24	Learn Earn committee	Prof. N.U.Deshmukh	Convener
		Prof. M. L. Mulik	Member
		Prof. D. D. Pawar	Member
25	Grievances committee	Prof. H. V. Soshte	Convener
		Prof. B. G. Chavan	Member
		Prof. D.G.Chavan	Member
26	Publicity committee	Dr. R. R. Taur	Convener
		Prof. G. Gailar	Member
		Prof. P. V. Ingale	Member



27	Website Development committee	Prof. P.P.Kamble	Convener
		Prof. P.S.Gaikwad	Member
		Prof. C.D.Gurav	Member
28	Skill Development committee	Prof. A.A.Pande	Convener
		Prof.N.G.Malbari	Member
		Prof. S.R.Wasvani	Member

[Handwritten Signature]
principal



Committees Year – 2017 - 18



Sr. No.	Committee	Member	Designation
1	Admission Committee	Prof. H.V. Soshte	Convener
		Prof. B. G. Pawar	Member
		Prof. G. P. Geedh	Member
		Prof. R. R. Taur	Member
		Prof. P. H. Patil	Member
		Pro. S. R. Waswani	Member
2	Time - Table	Prof. B. G. Pawar	Convener
		Prof.D. G. Chavan	Member
3	Exam Committee	Prof.D. G. Chavan	Convener
		Prof. M. L. Mulik	Member
		Prof. P.R.Bhosale	Member
		Prof. p.p.kamble	Member
		Prof. U.B.Gaikar	Member
		Prof. L.N.Bhoir	Member
4	Attendance Committee	Prof. M.V. KAMBLE	Convener
		Prof. M. M. Sawant	Member
		Prof. P. J. Jadhav	Member
5	Library Committee	Prof. R.V.Kapadi	Convener
		Prof.H.V.Soshte	Member
		Prof.N.U.Deshmukh	Member
		Prof.D.G.Kamble	Member
		Prof.R.R.Kanse	Member
		Shri. P.C.More	Member
6	Disciplinary (Raging)	Prof. B. G. Pawar	Convener
		Prof. K.P.Kante	Member
		Prof. L. N. Bhoir	Member
7	Staff Academic	Prof. B. G. Pawar	Convener
		Prof. P.R.Bhosale	Member
8	Competitive Exam Cem.	Prof. L. N. Bhoir	Convener
		Prof. S. V. Patil	Member



18	Alumani Committee	Prof. H. V. Soshte	Convener
		Prof. B. G. Pawar	Member
		Prof. D. G. Chavan	Member
		Prof. R. R. Taur	Member
		Prof. P. H. Patil	Member
19	Nature Club Committee	Prof. P. R. Bhosale	Convener
		Prof. D. D. Pawar	Member
		Prof. Y. S. Tribhuvane	Member
		Prof. S. A. Kelkar	Member
20	Cultural committee	Prof. D. G. Kamble	Convener
		Prof. M. P. Kakade	Member
		Prof. R. R. Kanse	Member
		Prof. M.S. Chavan	Member
21	Research Committee	Prof. S. S. Kamble	Convener
		Prof. R. R. Taur	Member
		Prof. M. P. Kakade	Member
22	College Canteen Committee	Prof. V. G. Sonar	Convener
		Prof. B. D. Bhoir	Member
		Prof. R. A. Tribhuvane	Member
		Prof. P.V.Ingale	Member
23	Scholarship committee	Prof. R. R. Kanse	Convener
		Prof. A. S. Gaikar	Member
		Prof. S.S.Kamble	Member
24	Learn Earn committee	Prof. N.U.Deshmukh	Convener
		Prof. M. L. Mulik	Member
		Prof. D. D. Pawar	Member
25	Grievances committee	Prof. H. V. Soshte	Convener
		Prof. B. G. Chavan	Member
		Prof. D.G.Chavan	Member
26	Publicity committee	Dr. R. R. Taur	Convener
		Prof. G. Gailar	Member
		Prof. P. V. Ingale	Member



9	Women Development	Prof. S. B. Tiwari	Convener
		Prof. S. S. Kamble	Member
		Prof. S.R. Wasvani	Member
		Prof. R. N. Sonawane	Member
		Prof. Geeta Gaikar	Member
10	Marathi Literary Association	Prof. H. V. Soshte	Convener
		Prof. D.G. Kamble	Member
11	English Literary Association	Prof. P. J. Jadhav	Convener
		Prof. M. S. Chavan	Member
12	Gymkhana Committee	Prof. H. V. Soshte	Convener
		Prof. M. Deshmukh	Member
		Prof. U. B. Gaikar	Member
		Prof. R. N. Khanderao	Member
		Prof. C. D. Gurav	Member
13	Science Forum Committee	Prof. P. H. Patil	Convener
		Prof. P. R. Bhosale	Member
		Prof. S. B. TIWARI	Member
		Prof. M. M. Sawant	Member
		Prof. K. P. Kante	Member
		Prof. A. S. Gaikar	Member
		Prof. Y. S. Tribhuvane	Member
		Prof. R. A. Tribhuvane	Member
14	IT Forum committee	Prof. P. P. Kamble	Convener
		Prof. P. S. Gaikwad	Member
		Prof. S. S. Wairalkar	Member
		Prof. C. D. Gurav	Member
15	N.S.S. committee	Prof. B. G. Pawar	Convener
		Prof. S. R. Waswani	Member
		Prof. M. V. Kamble	Member
		Prof. M. M. Sawant	Member
16	DLLE Committee	Prof. N. U. Deshmukh	Convener
		Prof. P. H. Patil	Member
17	Placement Cell	Prof. U. B. Gaikar	Convener
		Prof. S. Sarvade	Member
		Prof. N. Ghodvinde	Member



Committees Year – 2018 - 19



Sr. No.	Committee	Member	Designation
1	Admission Committee	Prof. H.V. Soshte	Convener
		Prof. B. G. Pawar	Member
		Prof. G. P. Geedh	Member
		Prof. R. R. Taur	Member
		Prof. P. H. Patil	Member
		Pro. S. R. Waswani	Member
2	Time – Table	Prof. B. G. Pawar	Convener
		Prof.D. G. Chavan	Member
3	Exam Committee	Prof.D. G. Chavan	Convener
		Prof. M. L. Mulik	Member
		Prof. P.R.Bhosale	Member
		Prof. p.p.kamble	Member
		Prof. U.B.Gaikar	Member
		Prof. L.N.Bhoir	Member
4	Attendance Committee	Prof. M.V. KAMBLE	Convener
		Prof. M. M. Sawant	Member
		Prof. P. J. Jadhav	Member
5	Library Committee	Prof. R.V.Kapadi	Convener
		Prof.H.V.Soshte	Member
		Prof.N.U.Deshmukh	Member
		Prof.D.G.Kamble	Member
		Prof.R.R.Kanse	Member
		Shri. P.C.More	Member
6	Disciplinary (Raging)	Prof. B. G. Pawar	Convener
		Prof. K.P.Kante	Member
		Prof. L. N. Bhoir	Member
7	Staff Academic	Prof. B. G. Pawar	Convener
		Prof. P.R.Bhosale	Member
8	Competitive Exam Cem.	Prof. L. N. Bhoir	Convener
		Prof. S. V. Patil	Member

9	Women Development	Prof. S. B. Tiwari	Convener
		Prof. S. S. Kamble	Member
		Prof. S.R.Wasvani	Member
		Prof. R. N. Sonawane	Member
		Prof. Geeta Gaikar	Member
10	Marathi Literary Association	Prof. H. V. Soshte	Convener
		Prof. D.G. Kamble	Member
11	English Literary Association	Prof. P. J. Jadhav	Convener
		Prof. M. S. Chavan	Member
12	Gymkhana Committee	Prof. H. V. Soshte	Convener
		Prof. M.Deshmukh	Member
		Prof.U.B.Gaikar	Member
		Prof.R.N.Khanderao	Member
		Prof. C.D.Gurav	Member
13	Science Forum Committee	Prof. P. H. Patil	Convener
		Prof. P. R. Bhosale	Member
		Prof. S. B. TIWARI	Member
		Prof.M.M.Sawant	Member
		Prof.K.P.Kante	Member
		Prof.A.S.Gaikar	Member
		Prof.Y.S.Tribhuvane	Member
		Prof.R.A.Tribhuvane	Member
14	IT Forum committee	Prof. P. P. Kamble	Convener
		Prof.P.S.Gaikwad	Member
		Prof.S.S.Wairalkar	Member
		Prof.C.D.Gurav	Member
15	N.S.S. committee	Prof. B. G. Pawar	Convener
		Prof. S. R. Waswani	Member
		Prof. M. V. Kamble	Member
		Prof.M M. Sawant	Member
16	DLLE Committee	Prof. N.U. Deshmukh	Convener
		Prof. P. H. Patil	Member
17	Placement Cell	Prof. U.B.Gaikar	Convener
		Prof. S. Sarvade	Member
		Prof. N.Ghodvinde	Member

18	Alumani Committee	Prof. H. V. Soshte	Convener
		Prof. B. G. Pawar	Member
		Prof. D. G. Chavan	Member
		Prof. R. R. Taur	Member
		Prof. P. H. Patil	Member
19	Nature Club Committee	Prof. P. R. Bhosale	Convener
		Prof. D. D. Pawar	Member
		Prof. Y. S. Tribhuvane	Member
		Prof. S. A. Kelkar	Member
20	Cultural committee	Prof. D. G. Kamble	Convener
		Prof. M. P. Kakade	Member
		Prof. R. R. Kanse	Member
		Prof. M.S. Chavan	Member
21	Research Committee	Prof. S. S. Kamble	Convener
		Prof. R. R. Taur	Member
		Prof. M. P. Kakade	Member
22	College Canteen Committee	Prof. V. G. Sonar	Convener
		Prof. B. D. Bhoir	Member
		Prof. R. A. Tribhuvane	Member
		Prof. P.V.Ingale	Member
23	Scholarship committee	Prof. R. R. Kanse	Convener
		Prof. A. S. Gaikar	Member
		Prof. S.S.Kamble	Member
24	Learn Earn committee	Prof. N.U.Deshmukh	Convener
		Prof. M. L. Mulik	Member
		Prof. D. D. Pawar	Member
25	Grievances committee	Prof. H. V. Soshte	Convener
		Prof. B. G. Chavan	Member
		Prof. D.G.Chavan	Member
26	Publicity committee	Dr. R. R. Taur	Convener
		Prof. G. Gallar	Member
		Prof. P. V. Ingale	Member

27	Website Development committee	Prof. P.P.Kamble	Convener
		Prof. P.S.Gaikwad	Member
		Prof. C.D.Gurav	Member
28	Skill Development committee	Prof. A.A.Pande	Convener
		Prof.N.G.Malbari	Member
		Prof. S.R.Wasvani	Member

Jankar
principal

Principal
Jeevandeep Shaikhanil Sanatha's
Arts, Commerce & Science College, Goveli,
Goveli, Tal. Kalgaon, Dist. Thane - 421103

Committees Year – 2019 - 20

Sr. No.	Committee	Member	Designation
1	Admission Committee	Prof. H.V. Soshte	Convener
		Prof. B. G. Pawar	Member
		Prof. P.N.Ghare	Member
		Prof. R. R. Taur	Member
		Prof. P. H. Patil	Member
		Pro. V.J.Sonar	Member
2	Time – Table	Prof. B. G. Pawar	Convener
		Prof.D. G. Chavan	Member
3	Exam Committee	Prof.D. G. Chavan	Convener
		Prof. P.H.Patil	Member
		Prof. P.N.Ghare	Member
		Prof. U.B.Gaikar	Member
		Prof. R.R.Kanse	Member
		Prof. p.p.kamble	IT Co-ordinator
4	Attendance Committee	Prof. M.V. KAMBLE	Convener
		Prof. M. M. Sawant	Member
		Prof. P. J. Jadhav	Member
5	Library Committee	Prof. R.V.Kapadi	Convener
		Prof.H.V.Soshte	Member
		Prof.N.U.Deshmukh	Member
		Prof.D.G.Kamble	Member
		Prof.R.R.Kanse	Member
		Shri. P.C.More	Member
6	Disciplinary (Ragging)	Prof. B. G. Pawar	Convener
		Prof. P.N.Ghare	Member
		Prof. L. N. Bholr	Member
7	Staff Academic	Prof. N.U.Deshmukh	Convener
		Prof. Y. S.Tribhuvane	Member
8	Competitive Exam Cell.	Prof. L. N. Bholr	Convener
		Prof. G.R. Tare	Member

9	Women Development	Prof. J.P.Deshmukh	Convener
		Prof. S. S. Kamble	Member
		Prof. S.R.Wasvani	Member
		Prof. Ranjana Prasanna	Member
		Prof. H.B.Bhoir	Member
10	Marathi Literary Association	Prof. H. V. Soshte	Convener
		Prof. D.G. Kamble	Member
11	English Literary Association	Prof. P. J. Jadhav	Convener
		Prof. M. S. Chavan	Member
12	Gymkhana Committee	Prof. H. V. Soshte	Convener
		Prof. M.Deshmukh	Member
		Prof.U.B.Gaikar	Member
		Prof.V.P.Tare	Member
		Prof. C.D.Gurav	Member
	Science Forum Committee	Prof. P. H. Patil	Convener
		Prof. M.M.Sawant	Member
		Prof. A.S.Gaikar	Member
		Prof. Y.S.Tribhuvane	Member
		Prof. H.B.Bhoir	Member
		Prof N.B.Tarmale	Member
		Prof. A.B.Kapadi	Member
14	IT Forum committee	Prof.P.N.Ghare	Convener
		Prof. P. P. Kamble	Member
		Prof. P.S.Gaikwad	Member
		Prof. V.P.Tare	Member
		Prof. A.J.Ghodvinde	Member
		Prof. C.D.Gurav	Member
15	N.S.S. committee	Prof. B. G. Pawar	Convener
		Prof. S. R. Waswani	Member
		Prof. M. V. Kamble	Member
		Prof.M M. Sawant	Member
16	DLLE Committee	Prof. N.U. Deshmukh	Convener
		Prof. P. H. Patil	Member
17	Placement Cell	Prof. U.B.Gaikar	Convener
		Prof. N. G.Ghodvinde	Member
		Prof. K.P.Kori	Member
		Prof. S.V. Alam	Member

18	Alumani Committee	Prof. P.N.Ghare	Convener
		Prof. D.G.Kamble	Member
		Prof. D. G. Chavan	Member
		Prof. R. R. Taur	Member
		Prof. P. H. Patil	Member
19	Nature Club Committee	Prof. V.J.Herode	Convener
		Prof. C.V.Mahajan	Member
		Prof. Y. S. Tribhuvane	Member
		Prof. C.D.Gurav	Member
20	Cultural committee	Prof. D. G, Kamble	Convener
		Prof. H.B.Bhoir	Member
		Prof. Y.J.Mali	Member
21	Research Committee	Dr.V.J.Herode	Convener
		Prof. R. R. Taur	Member
		Prof. R.R.Kanse	Member
22	College Canteen Committee	Prof. V. G. Sonar	Convener
		Prof. K.P.Kori	Member
		Prof. N. B.Tarmale	Member
23	Scholarship committee	Prof. R. R. Kanse	Convener
		Prof. A. S. Galkar	Member
		Prof. A.B. Kakade	Member
24	Learn Earn committee	Prof. R.V.Kapadi	Convener
		Prof. N.U.Deshmukh	Member
		Prof. A.M.Eer	Member
25	Grievances committee	Prof. H. V . Soshte	Convener
		Prof. B. G. Pawar	Member
		Prof. D.G.Chavan	Member
26	Publicity committee	Dr. R. R. Taur	Convener
		Prof. G. Galkar	Member
		Prof.R.F. Jadhav	Member

27	Website Development committee	Prof.P.N.Ghare	Convener
		Prof. P.P.Kamble	Member
		Prof. P.S.Galkwad	Member
		Prof. V.P.Tare	Member
		Prof. C.D.Gurav	Member
28	Skill Development committee	Prof. H.R.Telavane	Convener
		Prof. M.S.Chavan	Member
		Prof. B.C.Choudhari	Member
29.	Student Council	Prof.B.G.Pawar	Convener
		Prof.P.N.Ghare	Member

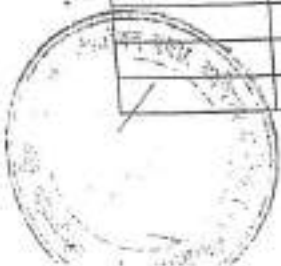
[Handwritten Signature]
principal

Principal
Jeevandeep Shaikhanik Sanstha's
Arts, Commerce & Science College, Govelli,
Govelli, Tal. Karjat, Dist. Thane - 421103

Committees Year – 2019 - 20

Sr. No.	Committee	Member	Designation
1	Admission Committee	Prof. H.V. Soshte	Convener
		Prof. B. G. Pawar	Member
		Prof. P.N.Ghare	Member
		Prof. R. R. Taur	Member
		Prof. P. H. Patil	Member
		Pro. V.J.Sonar	Member
2	Time – Table	Prof. B. G. Pawar	Convener
		Prof.D. G. Chavan	Member
3	Exam Committee	Prof.D. G. Chavan	Convener
		Prof. P.H.Patil	Member
		Prof. P.N.Ghare	Member
		Prof. U.B.Gaikar	Member
		Prof. R.R.Kanse	Member
		Prof. p.p.kamble	IT Co-ordinator
4	Attendance Committee	Prof. M.V. KAMBLE	Convener
		Prof. M. M. Sawant	Member
		Prof. P. J. Jadhav	Member
5	Library Committee	Prof. R.V.Kapadi	Convener
		Prof.H.V.Soshte	Member
		Prof.N.U.Deshmukh	Member
		Prof.D.G.Kamble	Member
		Prof.R.R.Kanse	Member
		Shri. P.C.More	Member
6	Disciplinary (Ragging)	Prof. B. G. Pawar	Convener
		Prof. P.N.Ghare	Member
		Prof. L. N. Bhoir	Member
7	Staff Academic	Prof. N.U.Deshmukh	Convener
		Prof. Y. S.Tribhuvane	Member
8	Competitive Exam Cell.	Prof. L. N. Bhoir	Convener
		Prof. G.R. Tare	Member

9	Women Development	Prof. J.P.Deshmukh	Convener
		Prof. S. S. Kamble	Member
		Prof. S.R.Wasvani	Member
		Prof. Ranjana Prasanna	Member
		Prof. H.B.Bhoir	Member
10	Marathi Literary Association	Prof. H. V. Soshte	Convener
		Prof. D.G. Kamble	Member
11	English Literary Association	Prof. P. J. Jadhav	Convener
		Prof. M. S. Chavan	Member
12	Gymkhana Committee	Prof. H. V. Soshte	Convener
		Prof. M.Deshmukh	Member
		Prof.U.B.Gaikar	Member
		Prof.V.P.Tare	Member
		Prof. C.D.Gurav	Member
13	Science Forum Committee	Prof. P. H. Patil	Convener
		Prof. M.M.Sawant	Member
		Prof. A.S.Gaikar	Member
		Prof. Y.S.Tribhuvane	Member
		Prof. H.B.Bhoir	Member
		Prof N.B.Tarmale	Member
		Prof. A.B.Kapadi	Member
14	IT Forum committee	Prof.P.N.Ghare	Convener
		Prof. P. P. Kamble	Member
		Prof. P.S.Gaikwad	Member
		Prof. V.P.Tare	Member
		Prof. A.J.Ghodvinde	Member
		Prof. C.D.Gurav	Member
15	N.S.S. committee	Prof. B. G. Pawar	Convener
		Prof. S. R. Waswani	Member
		Prof. M. V. Kamble	Member
		Prof.M M. Sawant	Member
16	DLLE Committee	Prof. N.U. Deshmukh	Convener
		Prof. P. H. Patil	Member
17	Placement Cell	Prof. U.B.Gaikar	Convener
		Prof. N. G.Ghodvinde	Member
		Prof. K.P.Kori	Member
		Prof. S.V. Alam	Member



18	Alumani Committee	Prof. P.N.Ghare	Convener
		Prof. D.G.Kamble	Member
		Prof. D. G. Chavan	Member
		Prof. R. R. Taur	Member
		Prof. P. H. Patil	Member
19	Nature Club Committee	Prof. V.J.Herode	Convener
		Prof. C.V.Mahajan	Member
		Prof. Y. S. Tribhuvane	Member
		Prof. C.D.Gurav	Member
20	Cultural committee	Prof. D. G, Kamble	Convener
		Prof. H.B.Bhoir	Member
		Prof. Y.J.Mali	Member
21	Research Committee	Dr.V.J.Herode	Convener
		Prof. R. R. Taur	Member
		Prof. R.R.Kanse	Member
22	College Canteen Committee	Prof. V. G. Sonar	Convener
		Prof. K.P.Kori	Member
		Prof. N. B.Tarmale	Member
23	Scholarship committee	Prof. R. R. Kanse	Convener
		Prof. A. S. Gaikar	Member
		Prof. A.B. Kakade	Member
24	Learn Earn committee	Prof. R.V.Kapadi	Convener
		Prof. N.U.Deshmukh	Member
		Prof. A.M.Eer	Member
25	Grievances committee	Prof. H. V . Soshte	Convener
		Prof. B. G. Pawar	Member
		Prof. D.G.Chavan	Member
26	Publicity committee	Dr. R. R. Taur	Convener
		Prof. G. Galkar	Member
		Prof.R.F. Jadhav	Member



27	Website Development committee	Prof.P.N.Ghare	Convener
		Prof. P.P.Kamble	Member
		Prof. P.S.Galkwad	Member
		Prof. V.P.Tare	Member
		Prof. C.D.Gurav	Member
28	Skill Development committee	Prof. H.R.Telavane	Convener
		Prof. M.S.Chavan	Member
		Prof. B.C.Choudhari	Member
29.	Student Council	Prof.B.G.Pawar	Convener
		Prof.P.N.Ghare	Member



Jankar
principal

Principal
Jeevandeep Shiksha Sanstha's
Arts, Commerce & Science College, Goveli,
Goveli, Tal. Kajjan, Dist. Thane - 421103

Distribution of Administrative Work Among Non-Teaching Staff

	P. More	S. More	A. Shind	Pooja	Rokade	K. chong	B. Chong	S. Hindu	S.Jadhav	R. Sase	M. Bhoir	J. Resal
1							✓					
2							✓					✓
3							✓					
4								✓				
5									✓			
6					✓							
7									✓			
8												✓
9			✓									
10									✓			
11										✓		
12										✓		
13									✓	✓		
14											✓	
15												✓
16												✓
17												
18				✓								
19										✓		
20					✓							

Sr. NO	Naturest work	P. Mor	S. Mor	A. Shin	Pooja	Rokade	K. chor	B. Chor	S. Hind	S. Jadh	R. Sase	M. Bhd	J. Rasa
21	Preparation of Vouchers Tally entries, Supply of financial record & Data		✓										
22	Fee Register preparing, out standing fee statements and sending reminder to students at month end.		✓			✓							
23	University correspondence			✓									
24	Accounting / Auditing, bank Reconciliation statement monthly Receipt & Payment	✓											
25	Writing Daily Cash book & getting Signed by principal	✓	✓										
26	To Attend all scrutiny & Inspection work	✓											
27	Scrutinizing all bills before principal signature & payment	✓											
28	Supervision of all types of dead stock Register maintained by each department	✓	✓										
29	Affiliation on line submission of information needed by Universities and Various agencies								✓				✓
30	Caste verification, Certification work of SC,ST, etc students								✓	✓	✓	✓	
31	Taking Dictation from mangement, Principal												
32	Typing work of all committees, meetings, Department, Competition, programmes, college magazine, prospects									✓			
33	All types of Library work							✓					
34	All types of Records related to Teachers Appointment Promotion, Notices, Termination, Confirmation, Memo, Staff Certification, etc										✓		
35	Typing work of UGC & NAAC and IQAC				✓								
36	All work related to P.G., from Admission to Result Distribution										✓		
37	L.M.C.D.C, Minutes	✓											
38	Minutes of Staff Meeting s, both teaching & Non teaching	✓											
39	Visitors Book												✓
40	Roshter & work-related to Panvel Joint Director	✓											

41	Maintaining files of Circular, orders of UGC, Universit Govt.	v																	
42	Book Banks Scheme																		

Handwritten signature

Principal
Jeevandeep Shaikshnik Sanstha's
Arts, Commerce & Science College, Govind
Govind, Tal. Kalyan, Dist Thane-421301

Distribution of free certificates

Purpose

- To issue academic certificate
- To issue government certificates
- To avail the benefits of other government schemes
- To make certificates easily available

Process

- Taken permission from Respected Tahsildar
- Instructed the villagers and students about programme.
- Free certificate distribution camp pamplate distributed.
- Certificates distributed by Tehsildar.

Evidence of Success

People received certificates as follows

1. Income certificate
2. Domicile and Nationality certificate
3. Senior citizen certificate
4. Local residence certificate





FREE DISTRIBUTION OF CERTIFICATES

The students often need various kind of governmental document for educational purposes or to receive benefits of different governmental schemes. The students and citizens from rural areas often have to face many obstacles and issues to receive these certificates. In order to help these students and citizens, our college holds a campaign of free distribution of certificates . This event is organized in coordination with the Tahsildar. On 5th July 2015, 674 certificates were allotted to beneficiaries, On 10th July 2016 , 594 certificates were issued. On 18th July 2017, 554 certificates were issued.



Jeevandeep
Principal
Jeevandeep Shiksha Sanstha's
Arts, Commerce & Science College, Tal. Kalyan,
Govelt, Tal. Kalyan, Dist. Kalyan - 421103



तहसिलदार तथा कार्यकारी दंडाधिकारी कार्यालय कल्याण

पत्ता - महात्मा फुले पोलीस रेल्वे स्टेशन जवळ, कल्याण-मुरबाड रोड, कल्याण पश्चिम
दुरध्वनी क्र. ०२५१-२३१४१२४ फॅक्स क्र. ०२५१-२३१४१२४
Email Id - tahkalyan@gmail.com

दिनांक : २४/०३/२०१८

प्रति,

मा. प्राचार्य,
जीवनदीप शैक्षणिक संस्थेचे
कला, वाणिज्य व विज्ञान महाविद्यालय,
पोवेली, ता. कल्याण, जि. ठाणे.

महोदय,

कल्याण तालुक्यातील ग्रामीण भागात आपण शिक्षणाबरोबरच समाजाभिमुख कार्यक्रमांचे आयोजन करून ग्रामीण विकासाचा स्तर उंचावत आहात याबद्दल अभिनंदन विशेषतः आपल्या महाविद्यालयातील एन. एस. एस. विभागाच्या मदतीने कल्याण तहसीलच्यामार्फत विविध कार्यक्रमांचे विविध आयोजन केल्या अनेक वर्षांपासून पोवेली परिसरात करण्यात येते यातील तीन वर्षांपासून परिसरातील विद्यार्थी आणि नागरिकांना मोफत दाखले वाटप शिबीर, निराधार व्यक्तीकरिता संजय गांधी निराधार योजना, श्रावणबाळ योजना यासारखे उपक्रम एन. एस. एस. विभागाने उत्कृष्टरित्या पार पाडले. परिसरातील आदिवासी समाजासाठी 'कातकरी उत्थान महाअभियान शिबीर' चा कार्यक्रमामध्ये एन. एस. एस. विभागाचा सहभाग महत्वाचा ठरला. आपल्या या सहकार्याबद्दल आपले धन्यवाद ! आपल्या उपक्रमास हार्दिक शुभेच्छा !

आपला स्नेहभाव

तहसिलदार कल्याण

Cleanliness drive after Ganesh Visarjan

Purpose

- To create awareness among the people of the village about the immersion of Ganesha.
- To create public awareness among students about river pollution.
- To create public awareness about river pollution among the villagers.
- Cleaning of river basins of unhygienic Ulhas river, Raite river, Titwala river due to immersion of Ganesha.

Process

1. Mr. Anand Bhagwat Organized lectures on water conservation.
2. Groups of students (6-6) were formed.
3. Pits were dug in the ground by the students.
4. The students collected half-discarded Ganesh idols lying on the edge and buried them in the ground.

Evidence of success

1. The river basins became clean.
2. Public awareness about river pollution was created.
3. Understood the importance of donations by immersing Ganesha idols.
4. Public awareness about river pollution was created among the villagers.

Necessary tools / resources:

spade, shovel, shovel, sack, first aid kit

- **CLEANING OF RIVER BANK**

On 29th September 2015 River bank was cleaned after the Ganesha Immersion at 'Pachawamaiel' this river bank was certainly polluted.



On 2nd October 2015, with the help of the entire college on the occasion of Gandhi Jayanti, this river was cleaned



- **RIVER SANITATION CAMP (RAYATE)**

Regarding the conservation of environment, NSS Volunteers Under the guidance of Prof Bhagyashri Pawar, cleaned the Ulhas river in Rayate and also appealed villagers to avoid water pollution.



MURTIDAN & RIVER SANITATION CAMP:

From 10th to 12th September during Ganesh chaturtiganesh idol immersion and Nirmalya are the chief components of water pollution. Water conservation was done for three consecutive days. Nirmalya was collected by volunteers and buried there after awakening the residents of Rayata people. The idols which are made of Plaster of Paris cause tremendous pollution to the river and to the environment eventually. NSS volunteers prohibited this immersion of POP idol into the river and encouraged people to donate them. 12 idols were collected and instead sent back to factories for reprocessing purpose.



Kamla

Principal

Jeevandeep Girls' Hostel Society's
 Arts, Commerce & Science College, Jewell,
 Gorek, Tal. Nargol, Dist. Talasari-421102

- **WATER CONSERVATION LECTURE & RIVER CLEANING:**

On 16th September 2016 Mr. Anand Bhagwat gave an exhortative lecture on water conservation and after that Students visited Rayate River and removed the idols of POP and buried them to dissolve.



- **TITWALA RIVER CLEANING:**

On 17th September 2016 after the pollution caused due to the immersion of Ganesha idols in the Kalu river of Titwala, Nirmalya was decomposed by volunteers and Ganesha idol were sent back for reprocessing. This helped to decrease the amount of River pollution.

Anand
Principal
Jyotiraj Sanshodhan Sanstha's
Ara. Commerce & ... Govelli,
Govelli, Tal. Kalyan ... - 421183



- **RIVER SANITATION CAMP (RAYATE)**

On 27th August 2017 on the occasion of Environment Day, NSS Volunteers Under the guidance of P.O Bhagyashri Pawar, did a cleaning of the Ulhas river in Rayate.



- **MURTIDAN**

On 27th August 2017 NSS volunteers visited Ulhas River and cleaned it. Similarly, transfer of POP idols was sent back to Ganapati manufacturing factory for preventing river pollution. This program created awareness amongst the people to prevent river pollution.

[Handwritten Signature]

Principal

Jeevandeep Sankhyanik Sanstha's
Arts, Commerce & Science College, Ghveli,
Ghveli, Tal. Kalyan, Dist. Thane - 421103



B. K. Kore
Principal

JSSP/ACS (G) / 120 -20

Date



ई-वेस्ट मॅनेजमेंट स्पर्धा

आपल्या महाविद्यालयात ई-वेस्ट मॅनेजमेंट स्पर्धा आयोजित करण्यात आली आहे. ज्यामध्ये तुम्हाला इलेक्ट्रॉनिक वेस्ट (ई कचरा- उदा-बंद रिमोट कंट्रोल, मोबाईल, सर्किट व इतर) जमा करावयाचा आहे. या स्पर्धेत भाग घेण्याकरीता तुम्हाला प्रत्येक विभाग/क्लासचा ग्रुप तयार करावयाचा आहे व त्या ग्रुपची संपूर्ण माहिती प्रा. वैभव तरे, आय.टी.विभाग, पहिला मजला, जुनी ईमारत, जीवनदीप महाविद्यालय, गोवेली (मोबाईल- ९८२३१७३७६९) यांच्याकडे जमा करावयाची आहे. तरी जास्तीत जास्त विद्यार्थ्यांनी या स्पर्धेत सहभागी व्हावे.

सूचना :-

१. स्पर्धेमध्ये प्रथम, द्वितीय, तृतीय व उत्तेजनार्थ बक्षीसे महाविद्यालयाकडून देण्यात येतील.
२. क्रमांक हे साहित्याच्या गुणवत्ता व प्रमाणानुसार काढले जातील.
३. प्रत्येक दिवसाचे ई-वेस्ट साहित्य हे मोठ्या पिशवीमध्ये जमा करण्यात येईल. त्या पिशवीवर ग्रुपचे नाव टाकण्यात येईल.
४. जानेवरी, २०२० पर्यंत आपण या स्पर्धेत सहभागी होऊन ई-वेस्ट कचरा जमा करू शकतो.

-डॉ. के. बी. कोरे
प्राचार्य

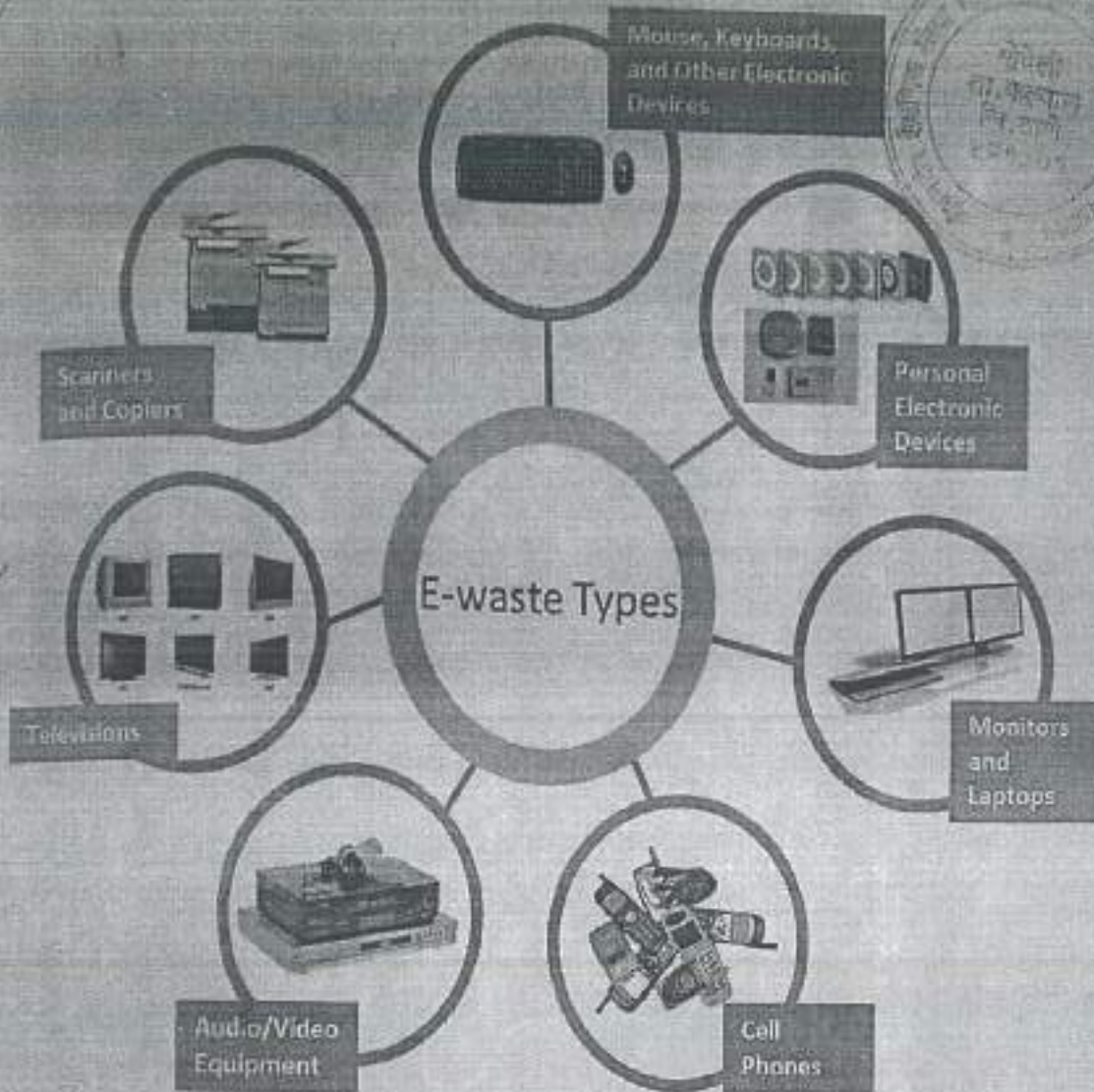
जीवनदीप शैक्षणिक संस्थेचे
कला, वाणिज्य व विज्ञान महाविद्यालय, गोवेली
गोवेली, ता. कल्याण, जि. ठाणे-४२११०३.



E-Waste Management

प्राचार्य

जीवनदीप शैक्षणिक संस्थेचे
बला, वाणिज्य व विज्ञान महाविद्यालय, गोवर्धनी
रोडवरी, ता. वरसाण, जि. ठाणे-४२११२०



[Handwritten Signature]

प्राचार्य

जीवनदीप शैक्षणिक संस्थेचे
 कला, वाणिज्य व विज्ञान महाविद्यालय, गोवेली
 गोवेली, ता.करमण, जि. ठाणे-४२२९०३.



संग्रहीत
वस्तु

ELECTRONIC DAMAGE MATERIAL

E-WASTE

संग्रहीत

30/1/19

- 1) Cables - 02
- 2) Monitor - 06
- 3) Keyboard - 02
- 4) Mouse - 02
- 5) Power cable - 11
- 6) Ear - 05
- 7) Headset - 02
- 8) Data -
- 9) Adapter - 06
- 10) Network card - 02+01=03
- 11) Network card - 02
- 12) Cables - 03
- 13) Projector - 01 [local]
- 14) Heavy cables - 02
- 15) Miscellaneous - 10

The Mention above material [E-waste] collected
 in By logs from IT Lab & stored at 1st Floor
 Computer Lab by (Mabeta & Mohit) on 30/1/19
 on being staff dated 30/1/2019

प्राचार्य
 जीवनदीप शैक्षणिक संस्थान
 कला, वाणिज्य व विज्ञान महाविद्यालय, मुंबई
 गोमेली, ता. मरुवाण, जि. ठाणे - 400 001



Handwritten signature

प्राचार्य
जीवनदीप शैक्षणिक संस्थेचे
कला, वाणिज्य व विज्ञान महाविद्यालय, गोवेली
गोवेली, ता.करव्हाण, जि. ठाणे-४२११०३.



Handwritten signature

प्राचार्य

जीवनदीप शैक्षणिक संस्थेचे
कला, कर्मिणा व विज्ञान महाविद्यालय, गोवेली
रोडवरी, धा.करबाज, जि. ठाणे-४२११०३.



Handwritten signature

प्राचार्य

जीवनदीप शैक्षणिक संस्थेचे
कला, वाणिज्य व विज्ञान महाविद्यालय, गंगवेली
भोबेरी, ता. कल्याण, जि. ठाणे-४२११०३.

E- Waste Management



Jssp College of Arts, Sci & Comm, Govelli, Kalyan have took initiative for The E – waste management project from 21th june 2019. having goal to complete the target of collection of 200 kg e-waste.

E- waste Management project started with hands of Guest ,Principal and College Director at College on special event of college "Vardhapan Divas".

On the same day E – waste as keyboards, waste mobiles, electric circuits etc .have collected from stubents ,staffs. total material collected with 3 kg e-waste.

Now, the core team of students working for the target of collecting 200 kg e- waste. daily the are working at their ground level.

Students spread the message of proper e -waste management with the help of social networking sites, whatsapp etc.

Core Team created Whatsapp group as E-Waste Management to contact for e- waste.

Today, dated 27th nov 2019. Our team have collected 15 kg . e- waste material.

प्राचार्य

जीवनदीप शैक्षणिक संस्थेचे
कला, मानव्य व विज्ञान महाविद्यालय, गोवेली
गोवेली, ता. वरुणा, जि. ठाणे-४२११०३.

E-Waste Material Collection From IT Department Students.



Kamran

प्राचार्य
जीवनदीप शैक्षणिक संस्थेचे
कला, वाणिज्य व विज्ञान महाविद्यालय, गोवेली
गोवेली, जिल्हा.कोल्हापूर, जि. कोल्हापूर-४२३१०३

E - Waste Material Collection From Science Staff.



James

प्राचार्य

जीवनदीप शैक्षणिक संस्थेचे
कला, वाणिज्य व विज्ञान महाविद्यालय, गोमेली
गोमेली, ता. मकरवान, जि. ठाणे-४२२१०३.

E - WASTE

Electronics waste, commonly known as e-scrap or e-waste, is the trash we generate from surplus, broken, and obsolete electronic devices. Electronics contains various toxic and hazardous chemicals and materials that are released into the environment if we do not dispose of them properly. E-waste or electronics recycling is the process of recovering material from old devices to use in new products.

Electronic waste in India

Electronic waste is emerging as a serious public health and environmental issue in India.

India is the "fifth largest electronic waste producer in the world"; approximately 2 million tons of e-waste are generated annually and an undisclosed amount of e-waste is imported from other countries around the world.



Discarded electronic waste

Annually, computer devices account for nearly 70% of e-waste, 12% comes from the telecom sector, 8% from medical equipment and 7% from electric equipment. The government, public sector companies, and private sector companies generate nearly 75% of electronic waste, with the contribution of individual household being only 16%.

E-waste is a popular, informal name for electronic products nearing the end of their "useful life." Computers, televisions, VCRs, stereos, copiers, and fax machines are

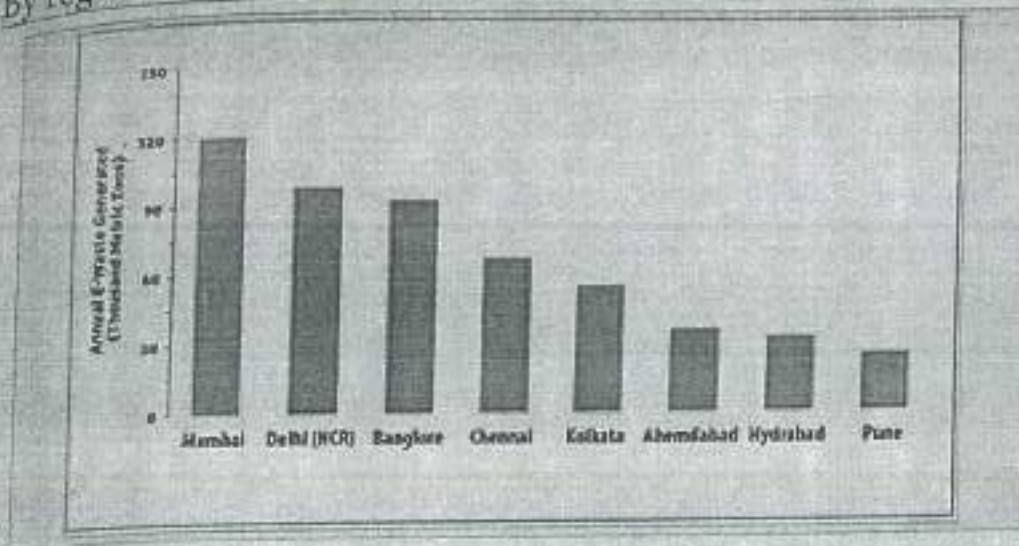
प्राचार्य

जीवनदीप शैक्षणिक संस्थेचे
कला, वाणिज्य व विज्ञान महाविद्यालय, गोवर्धनी
पोस्टोफीस, ना. कल्याण, जि. ठाणे. ४०११०१

common electronic products. Many of these products can be reused, refurbished or recycled. There is an upgradation done to this E-waste garbage list which includes gadgets like smartphone, tablets, laptops, video game consoles, cameras and many more. India had 1.012 billion active mobile connections in January 2018. Every year the number is growing exponentially.[4]

According to ASSOCHAM, an industrial body in India the, Compound Annual Growth Rate (CAGR) of electronic waste is 30%. With changing consumer behavior and rapid economic growth, ASSOCHAM estimates that India will generate 5.2 million tonnes of e-waste by 2020.[5][6]


By region



Major e-waste generating cities in India[8]

In India, the amount of e-waste generated differs by state. The three states that produce the most e-waste are as follows: Maharashtra, Tamil Nadu and Andhra Pradesh. Other states that produce significant e-waste are Uttar Pradesh, West Bengal, Delhi, Karnataka, Gujarat, Madhya Pradesh and Punjab.

Additionally, e-waste is disproportionately generated in urban areas—65 Indian cities generate more than 60% of India's total e-waste. Mumbai is the top e-waste producer followed by Delhi, Bengaluru, Chennai, and Kolkata.[1]


प्राचार्य

जीवनदीप शैक्षणिक संस्थाने
कला, वाणिज्य व विज्ञान महाविद्यालय, गोविली
गोविली, ता.कल्याण, जि. ठाणे-४२११०३.

Health and safety

Health hazards

Women and children are particularly vulnerable to the health effects of toxic e-waste exposure.



E-waste contains many hazardous substances which have been found to be extremely dangerous to human health and the environment; e-waste is often disposed of under less than ideal safety conditions. Since most e-waste is illegally processed by workers operating outside of formally-organized systems, these informal workers commonly practice unregulated and often dangerous recycling techniques that can have serious health consequences.[9] Unfortunately the recycling labor force has a low literacy rate and very little awareness of the hazards of e-waste which means that many of these workers are unknowingly engaging in activities that are harmful to their health.[1] In Delhi alone, an estimated 25,000 workers including children are involved in crude e-waste dismantling units—annually these units dismantle 10,000–20,000 tons of e-waste with bare hands.[10] They lack proper personal protective equipment and are exposed to toxins through the e-waste. The materials that are not recycled by waste pickers are often left in landfills or burned. Both methods can lead to toxic chemicals leaking into the air, water and soil. Workers in these facilities often do not have adequate safety gear and exposure to e-waste can lead to many health issues. Exposure can happen directly or indirectly through skin contact, inhalation of fine particles and ingestion of contaminated dust. Potential health outcomes from e-waste exposure include changes in thyroid functions, poor neonatal outcomes, including spontaneous abortions, stillbirths and premature births.[11] Side effects also included changes in behaviors and decreased lung function. There is also evidence of significant DNA damage.

Environmental impacts

The processes used to recycle and dispose of e-waste in India have led to a number of detrimental environmental impacts. As a result improper recycling and disposal techniques, air, water and soil throughout much of India is now contaminated with toxic e-waste byproducts.

प्राचार्य

जीवनदीप शैक्षणिक संस्थेचे
बला, धर्मिण्ड व विद्या महाविद्यालय, गोवेली
गोवेली, डा. कल्याण, जि. ठाणे-४२९३०७



Air

Air pollution is a widespread problem in India—nine out of the ten most polluted cities on earth are in India.[13] An important contributor to India's air pollution problem is widespread, improper recycling and disposal of e-waste.

For example, dismantling and shredding of e-waste releases dust and particulates into the surrounding air. Low value e-waste products like plastics are often burned—this releases fine particles into the air that can travel hundreds-to-thousands of miles.[14] Desoldering is a technique used to extract higher-value materials like gold and silver which can release chemicals and damaging fumes when done improperly.

In addition to contributing to air pollution, these toxic e-waste particulates can contaminate water and soil. When it rains, particulates in the air are deposited back into the water and soil. Toxic e-waste air particulates easily spread throughout the environment by contaminating water and soil which can have damaging effects on the ecosystem.

Water



A child walks in a trash-laden river in the Indian Himalayas.

India's sacred Yamuna river and Ganges river are considered to be among the most polluted rivers in the world. It is estimated that nearly 80% of India's surface water is polluted.[15] Sewage, pesticide runoff and industrial waste, including e-waste, all contribute to India's water pollution problem.[15]

[Handwritten signature]
प्राचार्य

जीवनदोष शैक्षणिक संस्थेचे
कला, वाणिज्य व विज्ञान महाविद्यालय, गोवेली
गोवेली, ता.रुखमाण, जि. वाय. ४२११०३.

E-waste contaminates water in two major ways:

1. Landfills: Dumping e-waste into landfills that are not designed to contain e-waste can lead to contamination of surface and groundwater because the toxic chemicals can leach from landfills into the water supply.
2. Improper recycling: Improper recycling produces toxic byproducts that may be disposed of using existing drainage such as city sewers and street drains. Once these products have been introduced into the local water supply, they can cause further pollution by entering surface water such as streams, ponds, and rivers.


Researchers at Jamia Millia Islamia University collected samples of soil and groundwater from five locations with high e-waste activity and found dangerous levels of contamination near unregulated e-waste sites.^[16] According to this study the average concentration of all heavy metals (except zinc) in water near e-waste sites in New Dehli was significantly higher than reference samples.

In addition to being measurable, the effects of industrial waste pollution in India are easily observable. Approximately 500 liters of industrial waste, which includes e-waste, are dumped into the Ganges and Yamuna river daily which has led to the formation of toxic foam^[17] which covers large regions of the rivers.^[18]

Soil

According to research by Jamia Millia Islamia University, the average concentration of heavy metals in topsoil near e-waste sites in India is significantly higher than in standard agriculture soil samples. Another study tested soil samples from 28 e-waste recycling sites in India and found that the soil contained high levels of toxic Polychlorinated biphenyls (PCBs), Polychlorinated dibenzodioxins (PCDDs) and Polychlorinated dibenzofurans (PCDFs).^[19]

Further soil sample analysis conducted by the SRM Institute of Science and Technology found the average concentration PCBs in Indian soil to be two times higher than the average amount globally. In India, PCB compounds are most prevalent in urban areas with the highest rate of soil-contamination found in Chennai (a city that imports e-waste), followed by Bengaluru, Dehli and Mumbai.


प्राचार्य

जीवनदीप शैक्षणिक संस्थेचे
कला, भाषाशास्त्र व विज्ञान महाविद्यालय, गोरेगाव
शोबेरी, ता. काठ्याच, जि. ठाणे-४२११०२.

Disposal techniques



Workers dismantling e-waste in Delhi.

The current e-waste disposal techniques in India have operated mostly in an informal manner due to the lack of enforcement laws and regulations. This has created a new area of economic gain for the country, especially among the urban and rural poor. Though it helps many make a living, those that are disposing of e-waste are usually not aware of the risks and health hazards that result from certain disposal techniques. There are two sectors that handle e-waste disposal and they can be divided into Informal or Formal Sectors.[21]

Formal sector[edit]

The formal sector includes two facilities authorized to deconstruct electronics for the entire country of India and are at capacity with five tons being disposed each day. These facilities primarily receive electronic waste from the producers of "service centers or take-back schemes" or companies that follow the environmental policies on disposing electronic waste. These facilities, though reaching capacity daily, are not the mainstream method of disposal. The formal sector only follows procedure of dismantling and segregating parts. They do not physically dispose of the electronic waste. The informal sector has made it difficult to compete.[21]

प्राचार्य

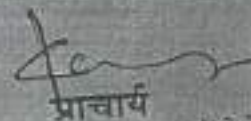
जीवनदीप शैक्षणिक संस्थेचे
कला, वाणिज्य व विज्ञान महाविद्यालय, गोकुली
रोडवरी, ज. बरवाग, जि. ठाणे-४२११०३.

informal sector[edit]

The informal sector handles electronic waste by recycling or final disposal. Much of electronics that reach India are out of date to more developed countries. Then within India, these electronics are passed around until no longer of use. There is a whole economic market for electronic waste because the parts can be dismantled and the scrap metals can be recycled. There are recycling techniques that are not following any type of environmental or health standards. Some of the methods used are acid baths, burning cables, and disposing in nature which can be detrimental to the health of those participating in these disposal techniques

E-Waste Management and Handling Rules, 2011[edit]

An addition to the Environmental Protection Act of 1986, the E-Waste (Management and Handling) Rules of 2011 came into effect in May 2012. The rules stated that all manufacturers and importers of electronic goods were required to come up with a plan to manage their electronic waste. Producers or importers had to establish e-waste collection centers or employ take back systems. These rules also mandated that sellers of electronic goods must provide consumers with information on how to properly dispose of the electronics in order to prevent people from dumping their electronics with domestic waste. Further, companies that produce electronics which have the potential to become e-waste must make the consumer aware of the hazardous materials in their product. These rules established and placed specific responsibilities for each party involved in the production, disposal, and management of electronic waste. Specific responsibilities were given to the producer, collection centers, consumer or bulk consumer, dismantlers, and recyclers. These rules also mandated that commercial consumers and government departments must keep records of their electronic waste and make them available to state and federal Pollution Control Boards.[22]




प्राचार्य

जीवनदीप शैक्षणिक संस्थान
कला, यमिन्द्य व विज्ञान महाविद्यालय, आनंदी
रोड, रा. कल्याण, वि. जाले-४२११०२

E-Waste Management Rules, 2016 [edit]

E-Waste (Management) Rules, 2016 In October 2016, the E-Waste (Management) Rules, 2016 replaced the E-Waste (Management and Handling) Rules, 2016. This set of rules clarifies duties of responsible parties, enacts more stringent regulations on e-waste production, as well as clarifies the general definition of e-waste. In these rules, e-waste is defined as "electrical and electronic equipment, whole or in part discarded as waste by the consumer or bulk consumer as well as rejects from manufacturing, refurbishment and repair processes. 'Electrical and electronic equipment' in turn has been defined to mean equipment which are dependent on electric current or electro-magnetic field in order to become functional." [23] A major concept presented in these rules is the idea of Extended Producer Responsibility (EPR). Producers of electronic products must implement EPR in order to ensure that their electronic waste is delivered to authorized recyclers or dismantlers. These rules establish and place specific responsibilities for each party involved in the production, disposal, and management of electronic waste. Specific responsibilities were given to the manufacturer, producer, collection centers, dealers, refurbisher, consumer or bulk consumer, recycler, and the state government. These rules also stated target goals for certain industries to drastically reduce their collection of electronic waste



प्रचार्य

जीवनदीप शैक्षणिक संस्थाने
कला, वाणिज्य व विज्ञान महाविद्यालय, गोवेली
गोवेली, ता. काव्याण, जि. ह्यासे-४२११०३