

7.1.4

Water Conservation Facilities available in the institution

- 1. Rain Water Harvesting**
- 2. Borewell**
- 3. Construction of Tanks and Bunds**
- 4. Maintenance of Water Bodies and distribution system in the campus**



“Jeevandeep Shaikshanik Sanstha Poi’s”
ARTS, COMMERECE & SCIENCE COLLEGE, GOVELI
(Affiliated to University of Mumbai)
Goveli, Tal-Kalyan, Dist-Thane 421301

Sr No.	Index(Name of Activity)	Page No.
1	Water Conservation information	1-4
2	Bills	5-8
3	Policy	9-12
4	Geo-tagged photo	

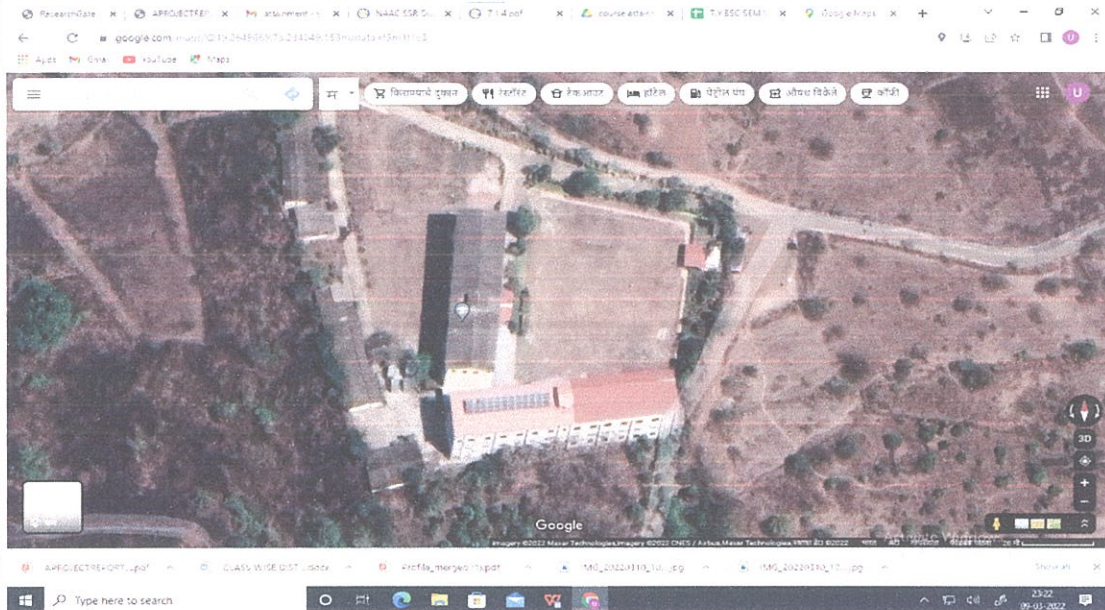


Estd. 2004
NAAC "C" Grade

"Jeevandeep Shaikshanik Sanstha Poi's"

ARTS, COMMERECE & SCIENCE COLLEGE, GOVELI

Location on map -19.2646333,73.2349439



Water conservation facilities available in the Institutions

1) Rain water harvesting

COMPONENTS OF RAINWATER HARVESTING SYSTEM

A water gathering framework includes parts for - transporting water through funnels or depletes, filtration, and tanks for capacity of reaped water. The regular parts of a water collecting framework are:

1. Catchments: The surface which straightforwardly gets the precipitation and gives water to the framework is called catchment zone. It can be a cleared region like a patio or yard of a building, or an unpaved zone like a garden or open ground.

Drains: Channels which encompasses edge of a slanting rooftop to gather and transport water to the capacity tank. Canals can be semi-round or rectangular and for the most part made locally from plain aroused iron sheet. Drains should be upheld so they don't hang or tumble off when stacked with water. The manner by which canals are settled basically relies upon the development of the house, for the most part iron or timber sections are settled into the divider

Channels: Conduits are pipelines or channels that convey water from the catchment or housetop zone to the collecting framework. Generally accessible courses are comprised of material like polyvinyl chloride (PVC) or electrifies press (GI)

Principal
Jeevandeep Shaikshanik Sanstha's
Arts, Commerce & Science College, Goveli,
Goveli, Tal: Kalray, Dist. Thane - 421 301.



RAIN WATER HARVESTING TECHNIQUES

Revive to ground water

Pits :- Recharge pits are built for energizing the shallow aquifer. These are built 1 to 2 m. wide and to 3 m. profound which are inlayed with stones, rock, coarse sand.

Trenches:- These are built when the penetrable strata is accessible at shallow profundity. Trench might be 0.5 to 1 m. wide, 1 to 1.5m. profound and 10 to 20 m. long depending up accessibility of water. These are refilled with channel. materials.



Rain Water Harvesting Plant (side view)



Rain Water Harvesting Plant(back view)

Principal

Jeewanandeeep Shikshnik Sanstha's
Arts, Commerce & Science College, Govvel,
Tal. Kalyan, Dist. Thane - 421 501.



Rain Water recharge project

Year 2021-22 (june, 2021- October 2021)

Total Rain -3493mm. 135 Days

Total water Harvest (apprx.) - 31964

2) Borewell -

Motor pump Name - Silver pump company

Depth- 350 foot (2 HP)

Capacity - 2inch

Consumption storage -24 Hrs



Principal
Jeevandeep Shaikshnik Sanstha's
Arts, Commerce & Science College
Govt, Tal: Kalyan, Dist. Thane - 421 201



3) Borewell -
Motor pump Name - Silver pump company
Depth- 200 foot (2 HP)
Capacity - 1 inch
Consumption storage -24 Hrs



Total water uses in the campus

- 1) Water required for toilet
- 2) Water required for Lab
- 3) Water required for cleaning of campus
- 4) Water required for canteen
- 5) Water required for plants / garden

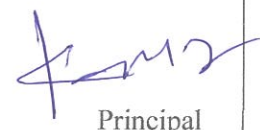
Maintanance of water bodies and distribution system in the campus

The overhead water tanks are cleaned within three months .

Water collected from borewell are pump to Overhead tanks and distribute these water ,
Through pipeline .

All toilets , lab , canteen are connected through the pipes .

IQAC co-ordinator


Principal

Principal
Jeevandeep Sanstha's
Arts, Commerce & Science College, Govelli,
Govelli, Tal. Kalyan, Dist. Thane - 421 501.

10/1/18

सबमर्सीबल पम्पसेट

कोटेशन

नाम	J.S.S.P. Govele
पता	Govele
फोन	बैंक

..... एम.एम. (बोर साइज), बोर की गहराई मीटर/फीट

1) PUMPS & MOTORS	सबमर्सीबल पम्पसेट	
हो. पाँ.	1 स्टेज	1 फेज
2) स्टार्टर D.O.L./S.D.S/ कंट्रोल पेनल बोर्ड SP/MP		1100
3) पाईप लाईन (ISI/Non ISI)	Asw	
1) इंच जी.आई./एच.डी.पी.ई.	1 मीटर/फीट @	200
2) इंच जी.आई./एच.डी.पी.ई.	मीटर/फीट @	
4) केबल	25 एम.एम. (ISI / Non ISI)	
	50 मीटर/फीट @	400
5) एसेसरीज सेट	ढक्कन	225
	पाटा क्लैम्प	200
	बेन्ड	200
	निप्पल	400
6) फिटिंग चार्ज	प्रति मीटर/फीट	800
7) अन्य सामान/ओटो स्वीच/रस्सी		500
8) वेला भाडा/ओटो भाडा	nm	200
	कुल राशी	18995/-



 QUALITY SYSTEMS
 ISO 9001 : 2008
 CERTIFIED



Principal

 Jeevandeep Shaikshanik Sanstha's
 Arts, Commerce & Science College, Govele,
 Govele, Tal. Kalyan, Dist. Thane - 421103

डिलर :

 सिल्टर®
पम्पस् एण्ड मोटर्स
सबमर्सीबल पम्पसेट

कोटेशन

नाम


JSSP College
Goveli

पता

फोन

बैंक


..... एम.एम. (बोर साईज), बोर की गहराई..... मीटर / फीट

१) PUMPS & MOTORS  सबमर्सीबल पम्पसेट	
हो.पॉ. स्टेज फेज	11 nos
२) स्टार्टर D.O.L./S.D.S./ कन्ट्रोल पैनल बोर्ड SP/TP	2 nos
३) पाईप लाईन (ISI/Non ISI)	2 no 27
१. ईच जी.आई/ एच.डी.पी.ई. मीटर/फीट @	1800
२. ईच जी.आई/ एच.डी.पी.ई. मीटर/फीट @	
४) केबल एम.एम. (ISI/Non ISI)	4160
500 मीटर / फीट @	
५) एसेसरीज सेट	ठकन 150
	पाटा क्लैम्प 300
	बेन्ड 150
	निप्पल 200
६) फिटिंग चार्ज प्रति मीटर / फीट	-
७) अन्य सामान / ओटो स्वीच / रस्सी	850
८) ठेला भाडा / ओटो भाडा	-
कुल राशी	9080



QUALITY SYSTEMS
ISO 9001
CERTIFIED




Principal
Jeevandeep Shaikshanik Sanstha's
Arts, Commerce & Science College, Goveli,
Goveli, Tal: Kaiyan, Dist: Thane - 421103

Auth. Distributor

Shop No. 11, Plaza Tower, Sector 17, Ulhasnagar.
Phone : 0251 - 2731270
Mobile : 97300 30583, 92254 78864

116
97300-053066
JSSP College

बक

6 1/2 एम.एम. (बोर साईज), बोर की गहराई 240 मीटर / फीट

1) PUMPS & MOTORS सबमर्सीबल पम्पसेट	
हो.पॉ. 2 स्टेज 20 फेज 1	12500
2) स्टार्टर D.O.L./S.D.S./ कन्ट्रोल पेनल बोर्ड SP/TP	2300
3) पाईप लाईन (ISI/Non ISI)	
1" ईचजी.आई/एच.डी.पी.ई. 22 मीटर/फीट @	5440
2. ईचजी.आई/एच.डी.पी.ई. मीटर/फीट @	
4) केबल 4mm एम.एम. (ISI/Non ISI)	
75 मीटर / फीट @ 68	5100
5) एसेसरीज सेट	
ढक्कन	150
पाटा क्लैम्प	200
बेन्ड	200
निष्पल	450
6) फिटिंग चार्ज प्रति मीटर / फीट	1500
7) अन्य सामान / ओटो स्वीच / रस्सी 70x13	910
8) टेला-भाडा / ओटो-भाडा N.R.V.	400
कुल राशी	29650



IS : 9472
QUALITY SYSTEMS
ISO 9001
CERTIFIED



[Signature]

Principal
Jeevandeep Shaikshanik Sanstha's
Arts, Commerce & Science College, Goveli,
Goveli, Tal: Kalyan, Dist: Thane - 421103

Auth. Distributor

Shop No. 11, Plaza Tower, Sector 17, Ulhasnagar.
Phone : 0251 - 2731270
Mobile : 97300 30583, 92254 78864

सिल्वर
म्पस् एण्ड मोटर्स
रिबिल पम्पसेट

116
PCL-05306

वक

JSSPCollege Goveli

6 1/2 एम.एम. (बोर साईज), बोर की गहराई 240 मीटर/फीट

1) सिल्वर PUMPS & MOTORS सबमर्सीबल पम्पसेट	
हो.पॉ. 2 स्टेज 20 फेज 1	12500
2) स्टार्टर D.O.L./S.D.S./ कन्ट्रोल पेनल बोर्ड SP/TP	2300
3) पाईप लाईन (ISI/Non ISI)	
1" ईच जी.आई/ एच.डी.पी.ई. 22 मीटर/फीट @	5440
2" ईच जी.आई/ एच.डी.पी.ई. मीटर/फीट @	
4) केबल 4mm एम.एम. (ISI/Non ISI)	
75 मीटर / फीट @ 68	5100
5) एसेसरीज सेट	
ढक्कन	150
पाटा क्लैम्प	200
बेन्ड	200
निप्पल	450
6) फिटिंग चार्ज प्रति मीटर / फीट	1500
7) अन्य सामान / ओटो स्वीच / रस्सी 70X13	910
8) ठेला भाडा / ओटो भाडा N.R.V.	400
कुल राशी	29650



IS : 9472
QUALITY SYSTEMS
ISO 9001
CERTIFIED



Principal
Jeevandeep Shaikhanik Sanstha's
Arts, Commerce & Science College, Goveli,
Goveli, Tal. Kalyan, Dist. Thane - 421103

Clean and green campus policy

Introduction:-

The green campus concept offers, to the institution for an opportunity to take lead in the redefining its environmental culture through installing, environmental ethics among the students, staff and public. The institute also promote clean and green campus through adopting practicing and promoting the environmental practices for generation of eco consciousness.

The increasing in the population only Earth create environmental challenges which are continuous to grow time to time and unprecedented effort is required to elevate the adverse effect that human activity on the ecosystem, effects. Which turn alter that's how we interact with the earth and with the nature inclusion of all approaches to solve problem will be necessary to effect a meaningful change.

Nature club

The nature club was established on 2004 by the principal mister nivritti Bundi and coordinator. The main aim of the club is " save Nature save environment from the environmental degradation".

This group addresses to the global needs of environmental issues through innovation and education.

Vision : nature club which creates awareness among the young students , staff and public about various environmental problems and conservation of nature and the natural resources in the surrounding area of the campus and to educate how do you live eco friendly.

Mission:-

1. To bring awareness among the students about hazara spoiling to the environment.
2. To help the students understand with each other individual responsibilities and to take an initiative to save the environment.
3. To help the students to make small steps in saving the environment.

Objective of nature club:-

1. To encourage the students to keep environment clean.
2. Educate the students to create awareness among public.
3. To make the students understand the importance of environment and its problems.

Functions of nature club:-

1. To sensitize the students to minimise the use of polluting product
2. To motivate the students to adapt environment friendly practices which includes paper bags ,save electricity ,no plastic etc.
3. To take the necessary steps to protect the environment.



Outcomes of nature club:-

1. Awareness which is created about hazardous that are spoiling the environment.
2. Students and teachers realise their individual responsibility to save and protect the environment.

Environmental policy of college:-

JSSP college , GOVELI, Kalyan which is the located near by the rural area near to Kalyan city Maharashtra state protect its own environment with its green campus initiative and maintain pollution free ,green and clean campus for the environmental development ,it's a basic work with the education policy which are implemented in the campus, the institution is committed to managing its campus in accordance with responsibility towards the promoting sustainable environment ,this responsibility can be demonstrated from following area.

- ★ Green environment and clean campus
- ★ Solid waste management
- ★ E waste management
- ★ Liquid waste management
- ★ Maintenance song water bodies
- ★ Water conservation and management
- ★ Landscaping with trees and plants
- ★ Energy use and conservation
- ★ Restricted use of automobiles
- ★ Ban on use of plastic in campus
- ★ Green audit

1. Green environment and clean campus:- Students are given instruction to maintain the campus clean and green chevron quotes related to the importance of clean and green environment are displayed on the campus.

2. Solid waste management:- The college pays dedicated focus to see that the minimum waste is generated in the campus. solid Waste is segregated as biodegradable and non degradable. All the departments and classrooms are provided with dustbin for dry westages disposal segregation of waste into dry and wet waste from the separately allotted dustbins is done in the strategic location to maintaining the campus clean and eco friendly.

3. E waste management:- With the proliferation of electronic which comes the challenges for their proper disposal , the college is grappling with efficiently and cost-effectively handle the issue of electronic waste / e waste on the campus.

People to discard such products due to normal wear and tear but technologically advancement have exerted. E-waste growth as a students, faculty, administrator frequently. Upgrade to better gadget this



surge has forced college administrator to carefully examine and address an environmentally responsible disposal of this product on-campus wide scale.

The college adopts most scientific and eco friendly e waste disposal mechanism like AMC is meant to periodically review the effective functioning of CPU and monitor and expert recommendation which are followed to dispose in the same market. All electronic waste like CPU, hard disk, laboratory equipment scrap which are sent periodically to the market for sale.

The institution has contract for approved electronic waste management and disposal facility in order to dispose electronic rest in the scientific manner.

Obsolete workable computer printer and other equipments discarded by the department sold as a scrap, the cartage of printer are refilled outside the college campus, UPS batteries are recharged and repaired by supplier.

4. Liquid waste management:- Water is the most important element for preservation of the life. Its finite commodity, if not managed properly will result in shortage in the near future water conservation can go a long way to help elevate these impending shortages. Students are made aware that conserving water is equivalent to conserving in future.

Drinking water from the tap refilling bottle as often as students need is one of the best practice followed by our nature club, disposable bottles are not allowed

5. Maintenance of water bodies:- Institution aims to provide best services to the students in all possible ways, education facility, infrastructure and basic necessities like water. The institutions with the help of ground water there are two borewells.

a) 2HP, 350 feet depth, 24 hrs water consumption

b) 1.5 HP, 200 feet depth, 24 hrs water consumption

The institution has good storage of groundwater drinking water and water for cleaning purpose.

For drinking purpose the institution has 4 RO purifier which purifiers and separate for drinking water. Apart from the groundwater the college has rainwater harvesting pits which function efficiently during the rainy season. It's mandatory to clean and disinfect water holding tanks at least monthly once or more often. If required this is to remove the algi (the plants growth which produces testes odours).

Stilt and bacteria which may be harmful the cleaning method is as follows

- ★ Empty tanks.
- ★ Scrub or pressure wash to the interior wall to remove the dirt.
- ★ Rinse out the tank.
- ★ Mix the solution of household bleach with water.
- ★ Leave the tank for 2 hours for draying and after that reveal with portable water. Proper filters are replaced periodically to provide the students and staff with pure drinking water.



7. Water conservation and maintenance:- The institution is located in the Goveli area. This area is known for acute water shortage in summer, so college realises the value of even drop of water and save the rainwater strategy for future use, hence college has installed rainwater harvesting mechanism, in that water is accumulated and deposited for reuse, the rainwater is collected and directed to deep pits of bore well for recharging and later it's use even the groundwater is directed towards the plants and trees, in spite of having maximum number of students the institution does not face any water crisis even in the summer time. The college has to borewells recharge system to renew or recharge borewells with rainwater.

8. Landscaping with trees and plants:- in the campus our nature club organising plantation by the students, staff in rainy season mostly the plantation of common trees which are available and cultivate fast, and planted, our nature club organises seminar on importance of the trees plantation to the society and the students.

9. Energy use and conservation:- in our college installed solar energy panels from the Sun group company from the solar energy the near about 45 minutes are consume per day. As per the availability of sunrise from the solar panel 12 KWH per day energy/ electricity is generated. We have total 10 solar panels. If excess generation of energy is produced then the units are transferred to the MSEDCL.

10. Restrictive use of automobiles:- In our college we are not allowed automobile to 2 wheeler and 4 wheeler in the campus parking is installed or placed near by the college campus we have also facility of cycle stand because some students used bicycle to come or travel purpose.

11. Ban on use of plastic:- In our college plastic is ban in the campus for that purpose we placed some boards like no plastic or plastic zone in the premises.

12. Green Audit:- Our college is doing Green audit.



Principal
Jeevandeep Shaikshanik Sanstha's
Arts, Commerce & Science College, Goveli
Goveli, Tal. Kalyan, Dist. Thane - 421103